

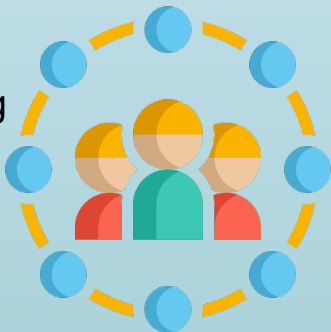


**SIDERO**

# Sidero Labs at a Glance

- Cumulative decades of Kubernetes development and operations from Dell, Microsoft, Boeing, LogicMonitor, Percona.
- CEO founded and scaled [LogicMonitor.com](https://www.logicmonitor.com)
- Active Github community (2000 stars)
- Funded by \$4.5B PSG
- Member of Cloud Native Computing Foundation (CNCF)
- Spearheading the Common Operating System Interface standard.

PSG | PROVIDENCE  
STRATEGIC  
GROWTH



A person is sitting on a rocky cliff, looking out over a vast sea of clouds. The sun is setting in the distance, creating a warm orange glow. The clouds are thick and white, filling the lower two-thirds of the image. The person is wearing a dark jacket and shorts, and is looking towards the right side of the frame.

# Vision

Kubernetes lifecycle management reimagined from the operating system to the entire stack. Highly secure distributed systems that allow all infrastructure operations to be automated, so customers can focus on their business, not IT.

# Inherent control. Infinite adaptability.



**Kubernetes has revolutionized  
how applications are built.**

It created a flexible, API-based way to  
build applications.

It made development more seamless  
and scalable than ever.



## Here's what it hasn't done yet:

Kubernetes can be notoriously inefficient to manage.

To build anywhere, and for every part of the stack, you need a predictable and consistent structure. From the operating system up.

Without it, the dream of Kubernetes environments built for speed and scale can become a nightmare for operations to maintain.

# **Today's operations teams face intense demands for stability and security.**

Even as 10s of systems can become hundreds.

Even as upgrades, audits, and security issues multiply.

**All while Kubernetes skills are scarce.**

# Sidero is made for operational stability in infinitely changing environments

An immutable open source platform that delivers full-stack structure and APIs at every layer.

Offering complete control without complexity.



Sidero delivers not only a better way to run Kubernetes consistently across platforms, but a completely reimagined OS to run it on:

- Immutable. The OS doesn't change while everything around it changes.
- API-driven. Simplifying communication between ops, apps, and the OS.
- Built with stability and security inherent. Providing the best practices Kubernetes never had.

**This is the next generation of infrastructure automation.**

# 100% Open Source

## Talos Linux

Purpose built OS designed for Kubernetes

Secure

Immutable

API Managed

## Sidero Metal

Bare metal lifecycle management

Declaratively provision, assign, wipe servers

Make on premises clusters easier than cloud.

## Arges

A complete multi-cluster, multi-environment management service.

Extend your cluster from bare metal to cloud

All designed to reduce administration while improving security



# Inherent control. Infinite adaptability.

## Stability

**Confidence of a platform  
that only changes when  
you want it to**

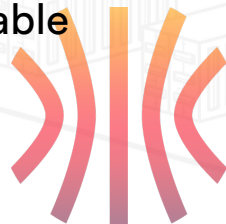
Sidero is born for stability.

And that's never been more important as fast, flexible container infrastructure becomes standard.

At the foundation of the Sidero platform is Talos Linux - a reimagined OS that's immutable. It's made to not change—so everything can change around it.

There's no shell or SSH access, reducing errors and the outages they can cause.

The same stable environment, the same stable experience.





# Inherent control. Infinite adaptability.

## Security

**Designed with  
security at the core**

We built Sidero from the bottom up with security in mind.

Organizations know protecting against security threats is an inescapable reality. No matter where you run Kubernetes, you need an environment you can trust.

Talos Linux is fully immutable from boot to shutdown. SSH and console access are replaced with encrypted API calls. No unneeded dependencies or services.

The Sidero platform is ideal for highly regulated environments where compliance is critical.

It's designed for greater control, and less exposure. And less to worry about.



# Inherent control. Infinite adaptability.

## Simplicity

**Easier management  
from a single,  
consistent, API-  
driven platform**

Sidero solves a fundamental problem with Kubernetes: manageability.

Easier updates, better sight across systems, simpler scale. Manage hundreds of systems like you're managing one.

Sidero delivers a consistent platform, whether you run on a public cloud, virtualized platform, bare metal or at the edge. The same processes and tools. API-driven, all the way to the OS.

Sidero becomes an extension of your team—helping you leverage the Kubernetes skills you have, and leveling up where you don't.

Start right away. Learn as you go.



**Inherent control. Infinite adaptability.**

# Sustainability

**Open source ethos  
and expertise,  
powered by  
community**

Open source both in our code, and our DNA.

We believe in community. We engage with our community because we've benefited from this and other communities.

We started Sidero because we faced real problems in operations. We wanted teams to have everything they love about Kubernetes and modern infrastructure—and a lot less of everything they don't.

And we believe we solve those problems together.





## What People Say about Talos

“Talos is the purest implementation of the machines-as-cattle design ethic I've seen, something I greatly appreciate. “

“What really interested me in Talos was the fact that it was API driven. I also really liked the idea of the immutable nature of the OS to reduce the need to manage a full OS,”

“I like the idea that finite system resources must be maximally made available to the workloads, not things that have no relevance to what the purpose of such workloads is. That's why I find Talos so appealing.”

“My goal is to have a cluster that is not tied to a specific cloud provider, and can be deployed easily. I really like the project.”

“I don't believe in ansible/chef/puppet like systems to maintain Kubernetes, as it is prone to a lot of maintainability issues. I like the yaml config that Talos allows me to patch.”



# Enterprise Support

- Full support for Talos, Arges, Sidero and Kubernetes
- Root Cause Analysis across all components
- 24x7 / 365 / 1 Hour Support
- Dedicated Slack Channel
- Roadmap Participation (Feature Requests)
- Issue prioritization
- Available Dedicated Strategic Account Manager



# Support for the entire Kubernetes platform

- **24x7 / 365 / 1 Hour Support**
- **Dedicated Slack Channel**
- **Roadmap Participation**
- **Issue prioritization**
- **Available Dedicated Strategic Account Manager**

## **Talos Support**

- Includes support and fixes for Talos software, including workflows for immutable upgrades, operating system diagnoses, cluster API issues.

## **Kubernetes Support**

- Ensure proper integration with supported cloud providers, including GCP, Azure, and AWS, and hypervisors such as VMware
- Support for the latest stable releases of Kubernetes
- Support upgrading Kubernetes versions

## **Sidero Metal Support**

- Full support for bare metal server lifecycle management automation
- Integration of DRACs and IPMI





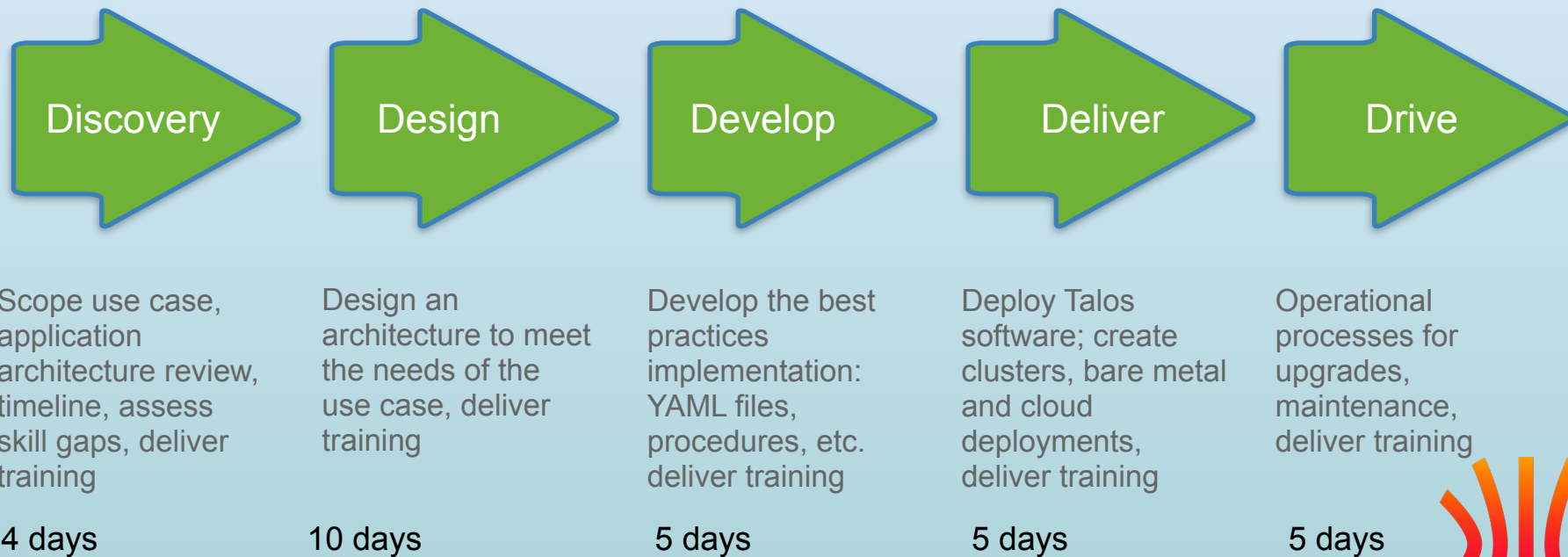
# Strategic Account Manager

- Ensures your projects succeed.
- Regular meetings to update issue status, advocate for feature requests, track service quality.
- Ensures your business needs are met by Sidero Labs, now and in the future.
- Manages renewals and expansion requirements
- Available for technical questions, escalation of support tickets, etc.
- Continually improves operations and processes.



# FastLane Deployment

Ensure rapid R.O.I and that deadlines are hit with FastLane Deployment.  
Get your project delivered and your team trained at the same time.



# Other Service Offerings

## Training

Sidero Labs will remotely deliver a 3 day training program to ensure that engineers have the knowledge necessary to build and maintain a Talos- powered Kubernetes environment. Prerequisite Linux and Kubernetes knowledge will be required. Up to 10 attendees.

## Professional Services

Professional services can be engaged to include projects such as implementing new features, adding device support, or other improvements to the Talos operating system and management components; troubleshooting third-party components, architectural design and discussion, implementation of management components, etc.



# Sidero Labs

**Inherent control. Infinite adaptability.**

Kubernetes lifecycle management reimagined from  
the operating system to entire stack

**Stability**

**Security**

**Simplicity**

**Sustainability**

